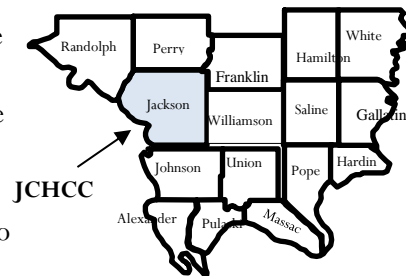




# Southern Illinois Cancer Report

Jackson County Healthy Communities Coalition (JCHCC) Lung Cancer Facts

The Healthy Southern Illinois Delta Network (HSIDN) serves as a catalyst for improving the health and quality of life in southern Illinois. The HSIDN consists of seven community coalitions directed by a steering committee representing the seven health departments in the southernmost 16 counties in Illinois. The JCHCC is one of these coalitions consisting of Jackson county in Illinois. Occurrence and death rates from lung cancer are higher in southern Illinois compared to other parts of the state. The HSIDN is a collaborative effort to improve health and lower the lung cancer death rate.

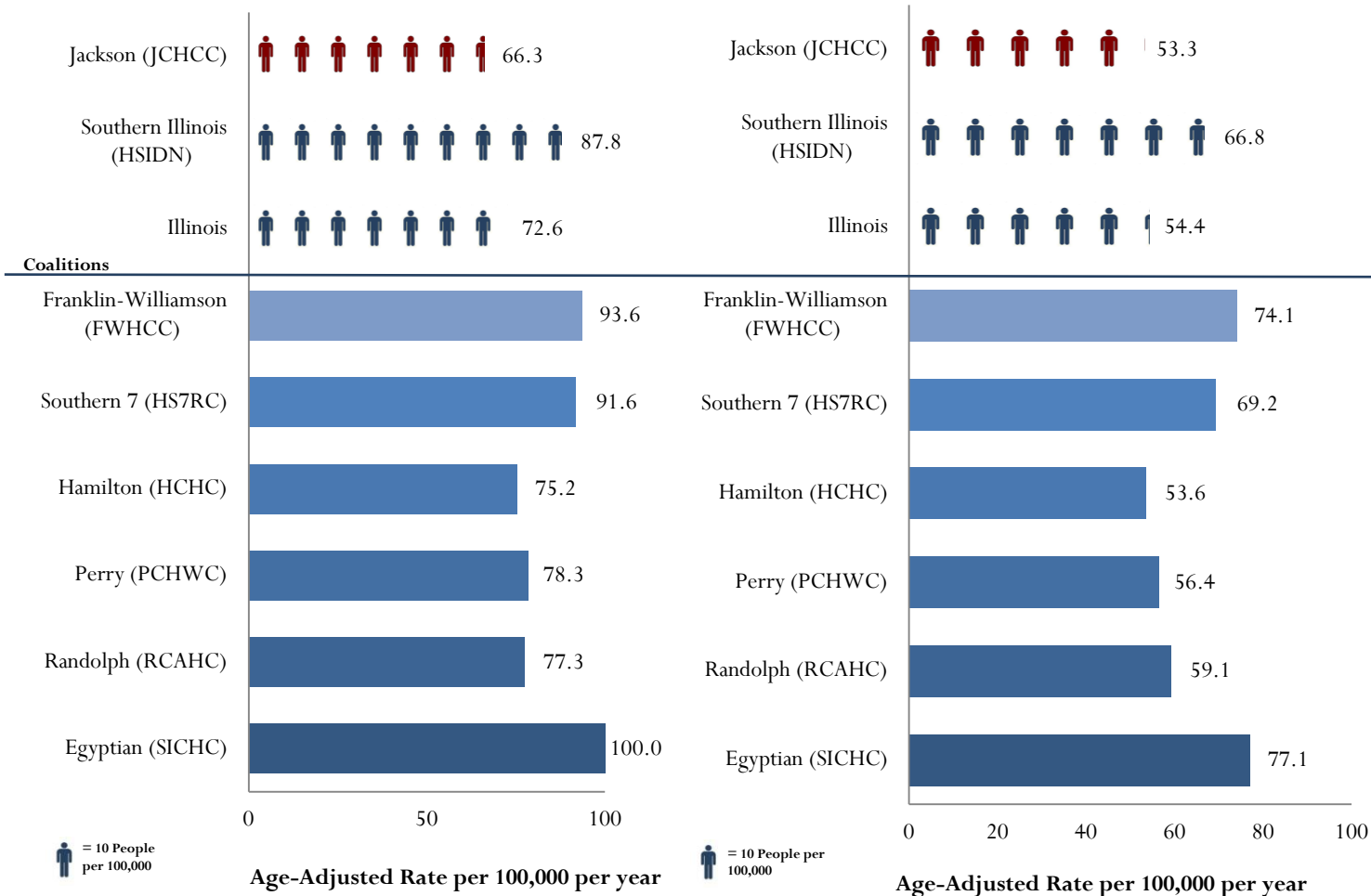


## Lung Cancer Occurrence and Death Rates

In 2013, 35 new lung cancer cases are anticipated in the Jackson County Healthy Communities Coalition (JCHCC) area.

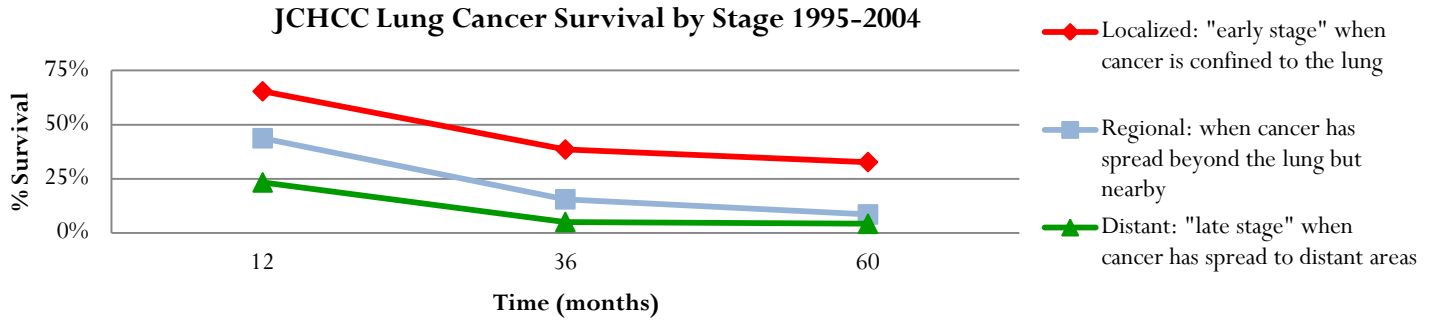
Lung Cancer Occurrence 2000-2009

Lung Cancer Death Rate 1999-2009



- ◆ Lung cancer occurs 30% more often in men than women living in the JCHCC area (85.6 per 100,000 men per year; 51.8 per 100,000 women per year).
- ◆ Lung cancer accounts for 30% of all cancer deaths, more than prostate and colon cancer combined in men, and more than breast cancer in women.

# Early Diagnosis of Lung Cancer

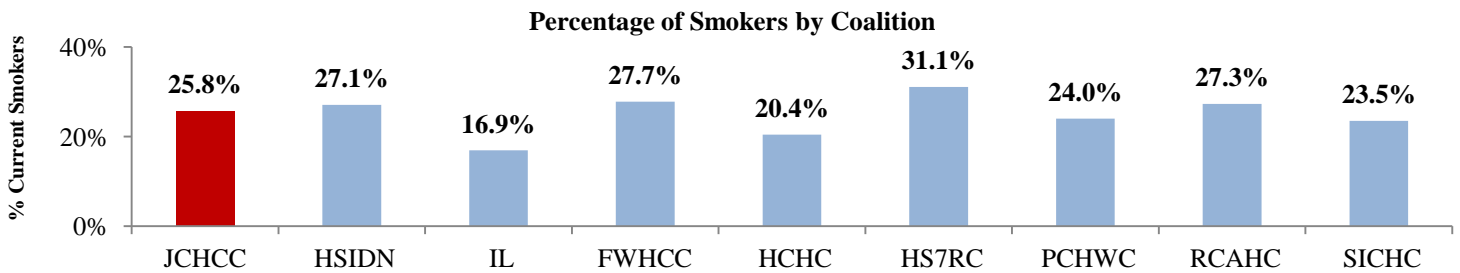


- ◆ Twenty five percent (25%) of lung cancer cases are diagnosed at early stage, when treatment is most likely to be successful (3 out of 5 people survive at least 1 year).
- ◆ Thirty-nine percent (39%) of lung cancer cases are diagnosed at late stage, when only 1 out of 4 people survive at least 1 year.

# Demographics and Lung Cancer Risk Factors

Coalition (Population)	Medicare	Medicaid	Uninsured	Poverty	Smoking	Patients: Primary Care Physician
FWHCC (105,918)	16.4%	25.3%	14.1%	16.6%	27.7%	1,983:1
HCHC (8,457)	19.2%	27.5%	15.0%	15.5%	20.4%	4,231:1
HS7RC (69,008)	16.8%	30.3%	13.1%	16.1%	31.1%	3,276:1
PCHWC (22,350)	10.7%	22.2%	21.0%	33.7%	25.8%	850:1
RCAHC (33,476)	15.2%	20.2%	12.0%	18.5%	24.0%	1,862:1
SICHC (45,167)	15.0%	20.8%	12.0%	17.0%	27.3%	1,967:1
<b>JCHCC (60,218)</b>	<b>18.6%</b>	<b>30.7%</b>	<b>11.3%</b>	<b>18.6%</b>	<b>23.5%</b>	<b>3,460:1</b>
HSIDN (344,594)	15.7%	25.8%	14.0%	18.5%	27.1%	2,518:1
Illinois (12,830,632)	13.0%	17.0%	15.0%	13.8%	16.9%	1,292:1

\* Excluding one or multiple counties



- ◆ JCHCC coalition has 3,460 patients per primary care physician (PCP), which is much lower than Illinois (1,292:1).
- ◆ Nationally, 80 - 90% of lung cancer cases are related to smoking.<sup>a</sup>
- ◆ JCHCC's percentage of smokers is 53% higher than the percentage of smokers for Illinois (16.9%).

**HSIDN region has a higher occurrence of lung cancer, and people are more likely to die from lung cancer. The rate of lung cancer HSIDN has increased whereas the state as a whole has remained constant.**



Note: Data was retrieved from IDPH, BRFSS, Census Bureau, County Health Rankings, and Community Health Indicators (CHSI)

<sup>a</sup>American Cancer Society: <http://www.cancer.org/acs/groups/content/documents/document/acspc-030080.pdf>